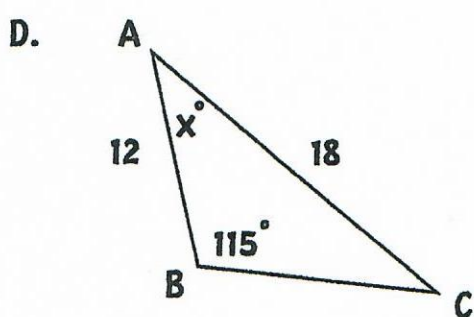
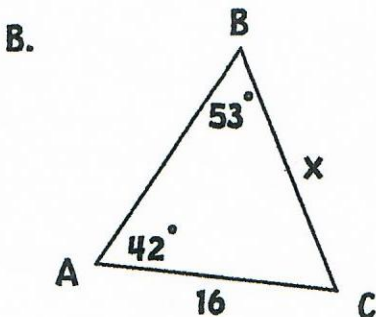
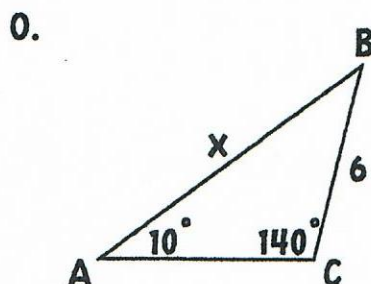
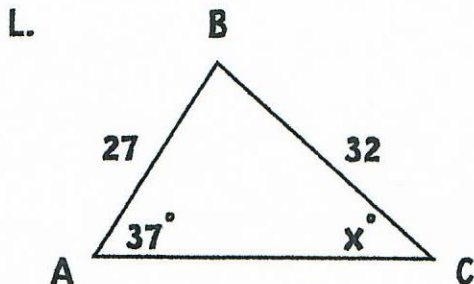


"What do you call an unemployed jester?" Assg #2

Find the indicated part of $\triangle ABC$. Round your answer to the nearest tenth. To figure out the joke, place the letter of each problem above the answer on the line below.



- O. $c = 12, \angle B = 52^\circ, \angle C = 57^\circ, b = \underline{\hspace{2cm}}$
- S. $a = 22, c = 15, \angle A = 30^\circ, \angle C = \underline{\hspace{2cm}}$
- Y. $a = 42, b = 54, \angle A = 35^\circ, \angle B = \underline{\hspace{2cm}}$
- O. $a = 17, b = 16, \angle A = 45^\circ, \angle B = \underline{\hspace{2cm}}$
- F. $c = 38, \angle A = 40^\circ, \angle C = 95^\circ, b = \underline{\hspace{2cm}}$
- n. $a = 2.7, b = 3.2, \angle B = 37^\circ, \angle C = \underline{\hspace{2cm}}$
- O. $a = 18, \angle A = 23^\circ, \angle C = 70^\circ, b = \underline{\hspace{2cm}}$

112.5 11.3 13.4 46.0 27.8 47.5 19.9 27.0 22.2 41.7 30.5